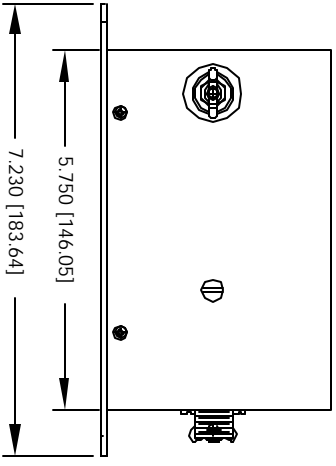
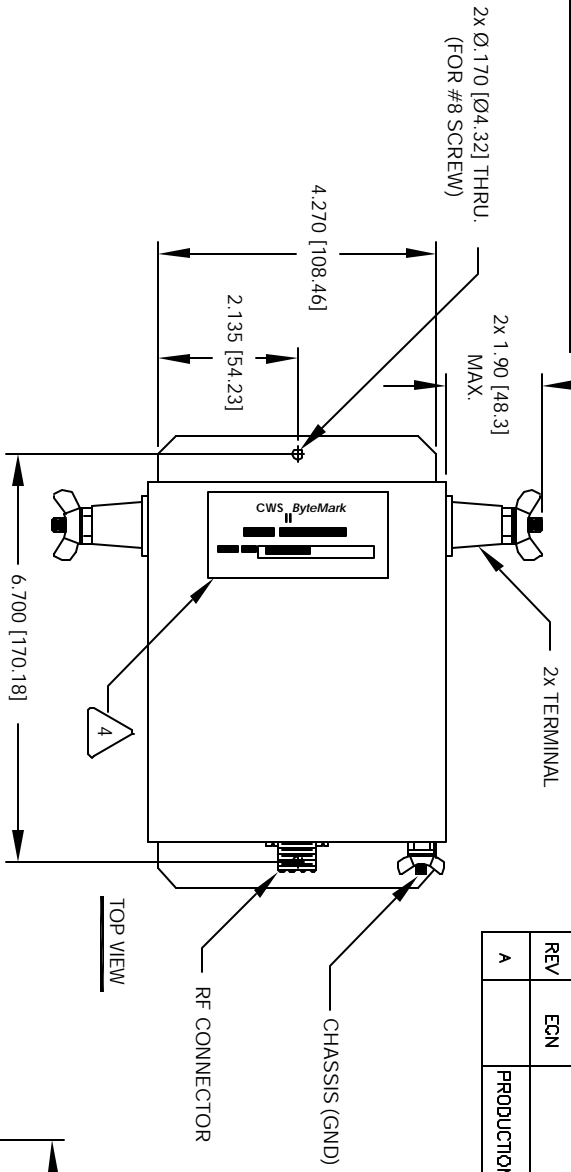


The information contained in this drawing is the sole property of CWS Coil Winding Specialist. Any reproduction in part or whole without written permission of CWS Coil Winding Specialist is prohibited.

REVISION HISTORY			
REV	ECN	DESCRIPTION	DATE
A		PRODUCTION RELEASE	8/25/04



- 5 APPLICATIONS:
FOR 450 OHMS TWIN LEADS TO REPLACE LONG CO-AXIAL
- WHERE SHOWN
MARK PART NUMBER AND REVISION

- 4
POWER RATING: 1 KW CONTINUOUS, 2 KW PEAK
FREQUENCY RANGE: 1.5 MHZ TO 30 MHZ
TO BALANCED OUTPUT: 450 OHMS
UNBALANCED CO-AXIAL INPUT: 50 OHMS SO239 OR N2
IMPEDANCE MATCH RATIO: 9:1
- 3 SPECIFICATIONS:

- WIRE: UL RECOGNIZED 200°C RATED MAGNET WIRE
CWS BYTEMARK OR OTHER APPROVED PART
 - 2 CORE: COATED FERRITE TOROID, K MATERIAL
 - 1 MATERIAL: UL RECOGNIZED 94V-0 FOR FLAMMABILITY
- NOTES: UNLESS OTHERWISE SPECIFIED.

UNLESS OTHERWISE SPECIFIED	DO NOT SCALE DRAWING
DRAWING AND TOLERANCE PER ANSI Y14.5M	
ALL DIMENSIONS ARE IN INCHES AND (MILLIMETERS)	
TOLERANCE ANGLES: ±1.0°	
AXIAL: ±0.010, ±0.020	
TOLERANCE METRICS: ±0.254, ±0.51	
ANGLE PROJECTION: 1st Angle	

QTY	CODE	IDENT	MFG. P/N	DESCRIPTION	ITEM NO.
PARTS LIST					
AUTOCAD SOLIDWORKS SIGN			DATE		
DRAWN: TKK			8/25/04		
CHECKED: JLAU			8/25/04		
ENGR: KSUM			8/25/04		
APPR: JLAU			8/25/04		
SCALE: B			SIZE: DIM. INCH. 9:1 - HB450		
SCALE: 2=1			REV: A		

COILS COM, INC		CWS Coil Winding Specialist	
WWW.COILS.COM		1510 E. Edinger Ave.	
		LHR, B. Santa Ana, CA, 92705	