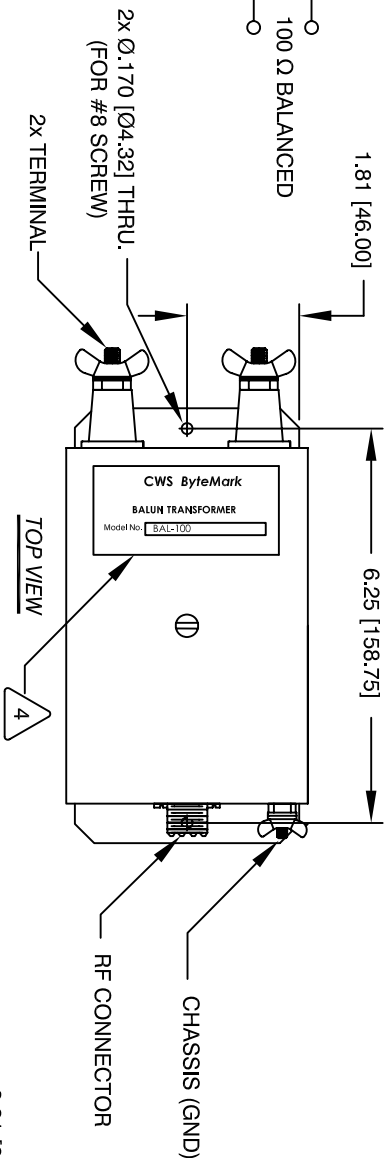
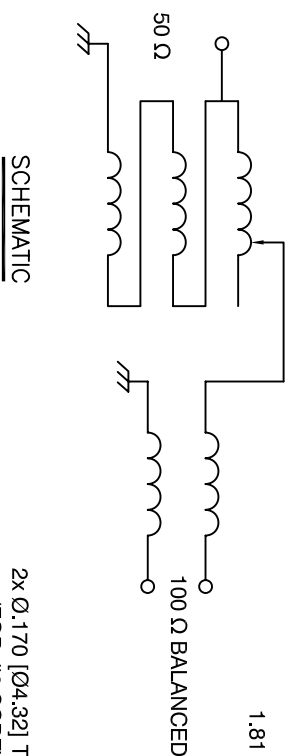
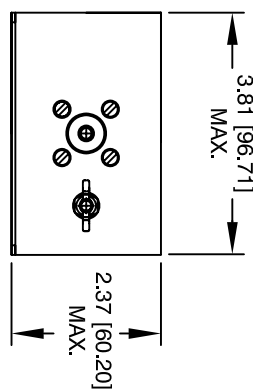
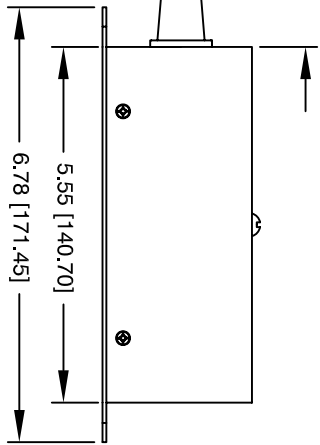


The information contained in this drawing is the sole property of CWS Coil Winding Specialist. Any reproduction in part or whole without written permission of CWS Coil Winding Specialist is prohibited.

REVISION HISTORY					
REV	ECN	DESCRIPTION	SIGN & DATE		
			BY	DATE	CHK DATE
B		PRODUCTION RELEASE	TDK	2/07/06	JLJU 2/07/06
C		UPDATED AND ROHS COMPLIANT	RLL	2/05/11	JLJU 2/05/11



- 6 BUILT TO ROHS COMPLIANCE
- WAVELENGTH ABOVE GROUND.
- AND $\frac{1}{2}$ WAVE DIPOLES AT 0.33
- FOR QUAD LOOP ANTENNAS
- APPLICATIONS:
- WHERE SHOWN
- MARK PART NUMBER AND REVISION



- 4
- EFFICIENCY = 98%
- POWER RATING: 1 KW CONTINUOUS, 2 KW PEAK.
- FREQUENCY RANGE: 1.0 MHZ TO 30 MHZ
- TO BALANCED OUTPUT: 100 Ω, CERAMIC FEED THROUGH POSTS
- UNBALANCED CO-AXIAL INPUT: 50 Ω SO239
- IMPEDANCE MATCH RATIO: 1:2
- SPECIFICATIONS:

- WIRE: UL RECOGNIZED 200°C RATED MAGNET WIRE
- CWS BYTEMARK OR OTHER APPROVED PART
- CORE: COATED FERRITE TOROID, K MATERIAL
- 1 MATERIAL: UL RECOGNIZED 94V-0 FOR FLAMMABILITY
- NOTES: UNLESS OTHERWISE SPECIFIED, READ TEXT FROM BOTTOM UP.

FRONT VIEW					
QTY	CODE	MFG. P/N	DESCRIPTION	ITEM NO.	
IDENT					
PARTS LIST					
AUTOCAD	X	www.coliws.com Coil Winding Specialist Inc. 353 West Grove Avenue Orange, CA 92665, USA			
SOLIDWORKS					
SIGN	DATE				
DRAWN	2/07/06				
CHKD	2/07/06	TITLE: Transmission Line Transformer Balun Transformer 50 Ω : 100 Ω			
ENGR.	2/07/06				
KSUM	2/07/06				
APPR.	2/07/06				
SCALE	B	SIZE	UNC. NO.	REV	
NOT TO SCALE	BAL-100			C	
SHEET	1	OF	1		