

The information contained in this drawing is the sole property of Coil Winding Specialist Inc (CWS). Any reproduction in part or whole without written permission of CWS is prohibited.

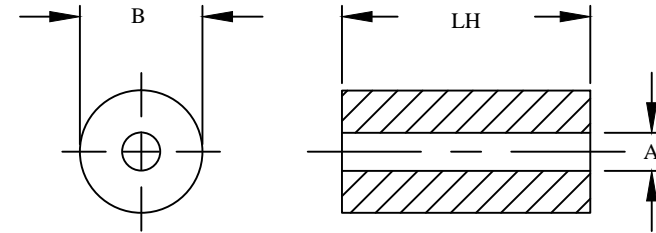
SB-6872-43

Features

NiZn ferrite with a range of 20 to 250 MHz for suppression of conducted EMI, that is used for inductive applications (ex: high frequency common-mode chokes)

REVISION HISTORY					
REV	ECN	DESCRIPTION	SIGN & DATE		
			BY	DATE	AP. DATE
A		Production release	EO	10/8/13	JL 10/8/13

Electrical Specifications				
Item	Unit/Symbol	Condition	Value	Tol.
Typical Impedance	Ω	1 MHz	N/A	Typ.
Typical Impedance	Ω	5 MHz	N/A	Typ.
Typical Impedance	Ω	10 MHz	35	Typ.
Typical Impedance	Ω	25 MHz	55	Typ.
Typical Impedance	Ω	100 MHz	88	Typ.
Typical Impedance	Ω	250 MHz	108	Typ.
Initial Permeability	μ_0	@ B < 10 gauss	800	Nom.
Temp. Coeff. Of initial Permeability	%, °C	20 - 70 °C	1.25	Typ.
Coercive Force	H _c	oersted	0.45	Typ.
Residual Flux Density	Gauss, B _r	N/A	1300	Typ.
Flux Density	Gauss, B	Initial (B), oersted	2900	Typ.
	Gauss, H	@ Field Strength (H), oersted	10	Typ.
Curie temperature	°C	T _c	> 130	Nom.
Resistivity	Ω cm, ρ	@ Field Strength	10 ⁵	Typ.
Loss Factor	10 ⁻⁶ , tan δ / μ	Initial	250	Typ.
	MHz	@ Frequency	1	Typ.



FRONT VIEW

SIDE VIEW

For additional detail, specifications and charts see:

http://www.bytemark.com/products/ferrite_matl.htm

Dimensional Tolerances				
	in	tol.	mm	tol.
B (Outer Diameter)	0.687	± 0.016	17.45	± 0.40
A (Inner Diameter)	0.375	± 0.009	9.50	± 0.25
LH (Length)	0.500	± 0.019	12.70	± 0.50
Weight	10.30 g			

CODE IDENT	MFG. P/N	DESCRIPTION	ITEM NO.
		PARTS LIST	
AUTOCAD	X	www.coilws.com www.cwsbytemark.com	CWSBYTEMARK 353 West Grove Ave. Orange, CA. 92865
SOLIDWORKS			
DRAWN	EO 10/8/13	TITLE: Ferrite Shielding Bead Material 43, NiZn	
CHECKED	JL 10/8/13	SIZE DWG. NO.	REV
ENGR.	JL 10/8/13	B	A
APPR.	JL 10/8/13	SCALE	SHEET 1 OF 1
		N/A	

UNLESS OTHERWISE SPECIFIED
 DIMENSIONING AND TOLERANCE PER ANSI Y14.5M
 ALL DIMENSIONS ARE IN INCHES AND [MILLIMETERS].
 TOLERANCE INCHES:
 .XXX=±.005 .XX=±.015 \angle =±0°30'
 TOLERANCE METRICS:
 .XXX=±.127 .XX=±.38 \angle =±0°30'
 ANGLE PROJECTION \angle
 DO NOT SCALE DRAWING