

The information contained in this drawing is the sole property of CW/SByteMark. Any reproduction in part or whole without written permission of CW/SByteMark is prohibited.

TYPICAL PART NO.

T 106 - 26 / /

OD in 100 th Inches _____

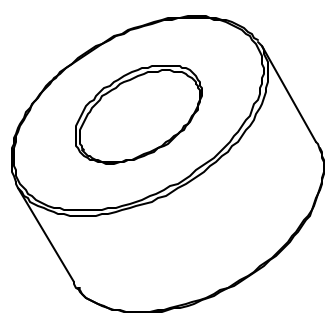
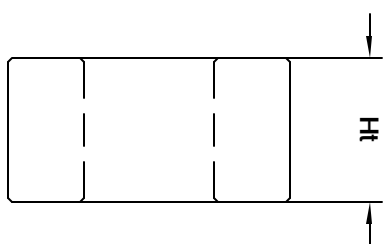
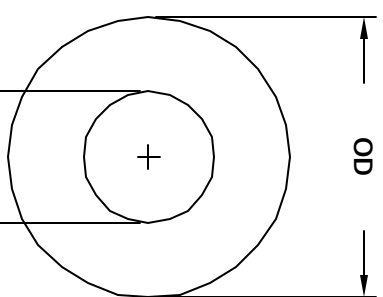
Mix No. _____

Letter Indicates Alternate Height _____

Code Area For Other Characteristics _____

REVISION HISTORY

REV	ECN	DESCRIPTION	DATE	CHK	DATE
B		PRE-PRODUCTION RELEASE	9/16/03	JKU	9/16/03



$$\text{REQUIRED TURNS} = \left[\frac{\text{DESIRED } L \text{ (nH)}}{(\text{AI}(\text{nH/N})^2)} \right]^{1/2}$$

TEMP. RATING: 65°C-75°C

DIELECTRIC = 500 Vrms AT 60 Hz

SPECIFICATIONS:

500 Vrms AT 60 Hz, APPROVED FOR FLAME CLASS UL94V-0

FINISH: ALL FINISH HAVE A MINIMUM DIELECTRIC STRENGTH OF

NOTES: UNLESS OTHERWISE SPECIFIED.
 1 MATERIAL: IRON POWER. COATING: UL RECOGNIZED 94V-0 FOR FLAMMABILITY

UNLESS OTHERWISE SPECIFIED
 DIMENSIONS ARE IN INCHES
 TOLERANCE PER FIG 11.5M
 ALL DIMENSIONS ARE IN NOTES
 AND [DIMETERS]
 TOLERANCE INCHES
 .XXXXX .XXXX .015
 .XXXX .127 .XXXX .38
 ANGLE PROJECTION
 DO NOT SCALE DRAWING

QTY	CODE IDENT	MFG. P/N	DESCRIPTION	ITEM NO.
			PARTS LIST	
			CW/SByteMark	
			1510 E. Edinger Ave, Unit B, Santa Ana, CA 92705	
			Toroidal Cores	
			T-SERIES	
			SCALE 6=1	
			SHEET 1 OF 1	