

The information contained in this drawing is the sole property of Coil Winding Specialist Inc (CWS). Any reproduction in part or whole without written permission of CWS is prohibited.

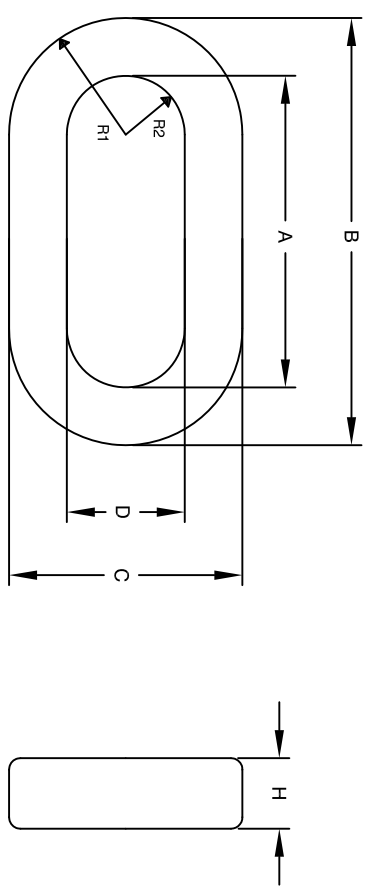
REVISION HISTORY						
REV	ECN	DESCRIPTION	BY	DATE	CHK	DATE
A		INITIAL RELEASE	JL	02/21/17	JM	02/21/17

**Features**

- High Permeability (30-80k), high impedance Z and high insertion attenuation
- Suppresses the asymmetrical EMI currents
- High saturation Flux density can reduce over voltage peaks
- High Curie Temperature and excellent temperature characteristics
- Core Type: Nanocrystalline, NanoByte™

Electrical Specifications					
Item	Units	Condition	Value	Tol.	
$A_L$	$\mu\text{H}/\text{N}^2$	@ 10KHz	20.9 - 45	N/A	
$A_L$	$\mu\text{H}/\text{N}^2$	@ 100KHz	10.5	N/A	
Permeability @ H peak 3.1 mA/cm	$\mu_0$	@ 10KHz	30000	$\pm 25\%$	
$A_e$	$\text{cm}^2$	N/A	3.30	$\pm 10\%$	
$L_e$	cm	N/A	44.70	$\pm 10\%$	
$L_e \times \text{N}$	mA x turn	@ 10KHz	100	$\pm 10\%$	
$L_e \times \text{N}$	mA x turn	@ 100KHz	100	$\pm 10\%$	
Saturation Flux Density	T	N/A	1.2	Max.	
Curie Temperature	$^{\circ}\text{C}$	N/A	580	Norm.	

Dimensions and Tolerances				
	in	tol.	mm	tol.
<b>Core Only</b>				
B (Outer Diameter)	6.30	$\pm 0.40$	160	$\pm 1$
A (Inner Diameter)	5.12	$\pm 0.40$	130	$\pm 1$
H (Height)	1.18	$\pm 0.40$	30	$\pm 1$
<b>With Case On</b>				
B (Outer Diameter 1)	7.76	$\pm 0.40$	197.0	$\pm 1$
C (Outer Diameter 2)	4.37	$\pm 0.40$	111.0	$\pm 1$
A (Inner Diameter 1)	6.10	$\pm 0.40$	155.0	$\pm 1$
D (Inner Diameter 2)	2.72	$\pm 0.40$	69.0	$\pm 1$
H (Height)	1.42	$\pm 0.40$	36.0	$\pm 1$
R1	2.19	$\pm 0.40$	55.5	$\pm 1$
R2	1.36	$\pm 0.40$	34.5	$\pm 1$



CODE	MFG. P/N	DESCRIPTION	ITEM NO.
IDENT			

AUTOCAD SOLIDWORKS		CWSBYTEMARK	
DATE	DATE	353 W Grove Ave	Orange, CA 92665

PARTS LIST		TITLE	
DRWN	DATE	Nanocrystalline Core	
ENGR.	DATE		
APPR.	DATE		

UNLESS OTHERWISE SPECIFIED
DIMENSIONING AND TOLERANCE PER ANSI Y14.5M AND (MILLIMETERS).
TOLERANCE RANGES: .XX±.005 .XX±.015 .XX±.127 .XX±.38
ANGLE PROJECTION:
DO NOT SCALE DRAWING